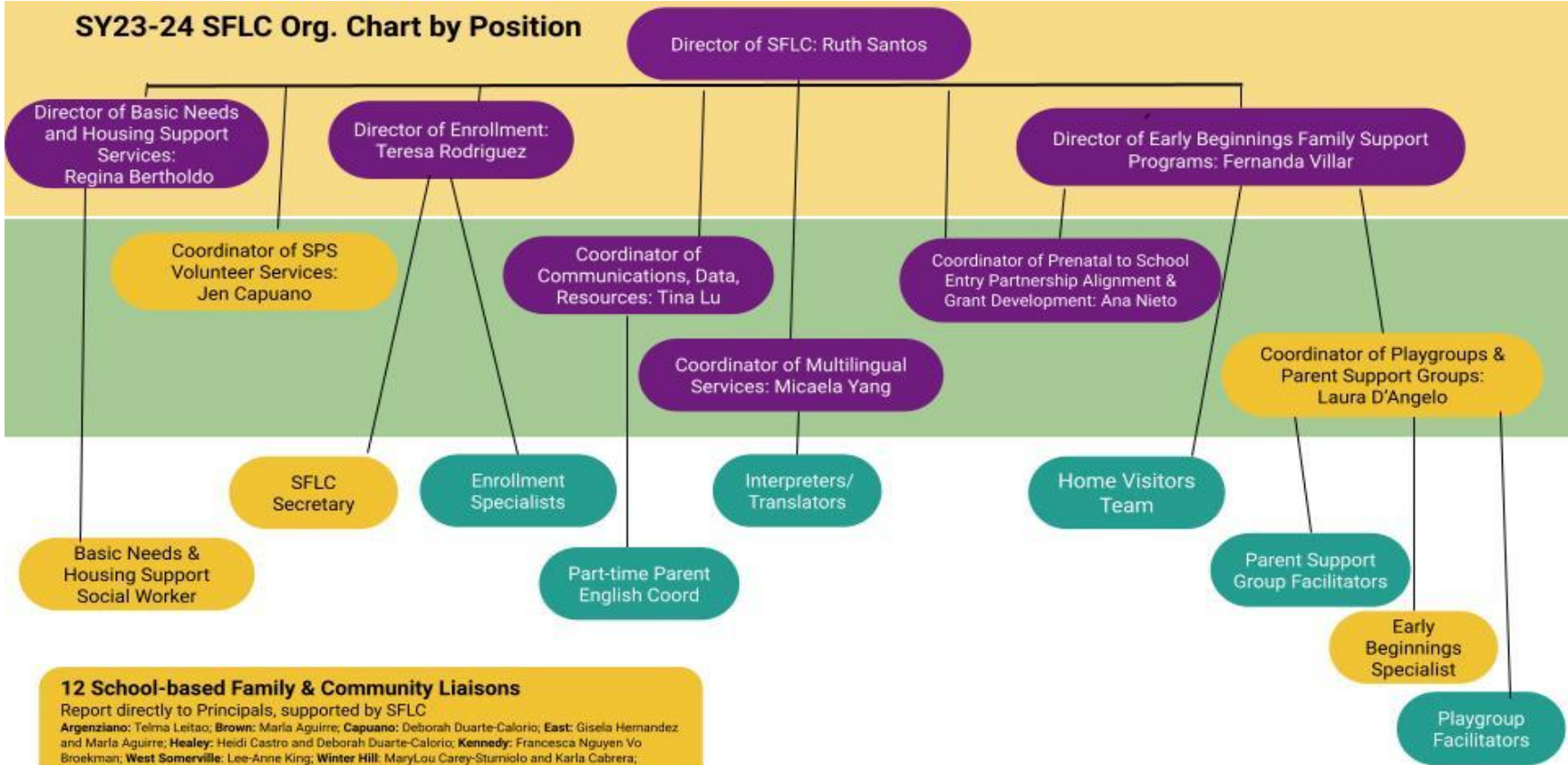




# SFLC 2023-2024



# SY23-24 SFLC Org. Chart by Position



## 12 School-based Family & Community Liaisons

Report directly to Principals, supported by SFLC  
**Argenziano:** Telma Leitao; **Brown:** Marla Aguirre; **Capuano:** Deborah Duarte-Calorio; **East:** Gisela Hernandez and Marla Aguirre; **Healey:** Heidi Castro and Deborah Duarte-Calorio; **Kennedy:** Francesca Nguyen Vo Broekman; **West Somerville:** Lee-Anne King; **Winter Hill:** MaryLou Carey-Sturniolo and Karla Cabrera; **SPS/Next Wave/Full Circle:** Nayi Padilla, Nehemie St. Louis, Eline Santana



Leadership Team Members

# Cradle to Career: Comprehensive Family Engagement



## Early Childhood

- **SomerBaby (w/ SomerPromise)**
- **Playgroups**
- **Developmental Screening**
- **Parent/Guardian Support Groups**
- **Parenting Workshops**
- **ParentChild+ Home Visiting Program**
- **Cross-sector Alignment of Early Childhood Education**

## Enrollment/Transition into SPS

- **Transition support in collaboration with Early Childhood Department**
- **Enrollment Office: multilingual, in-person support**
- **School-based Family & Community Liaisons**

## Family Engagement in SPS

- **School-based Family & Community Liaisons**
- **Multilingual Services: Translation & Interpretation**
- **Parent English Classes**
- **Basic Needs & Housing Support Services**
- **Volunteer Program**





# Birth-5 Programs & Services

*Strengthening Protective Factors*





# Birth-5 Programs & Services: 2023-24

## SFLC Multilingual Playgroups

17

Weekly SFLC Playgroups

465

Families who participated  
(as of April 24, 2024)

5

Locations

Elizabeth Peabody House  
Early Head Start  
Growing Center  
Somerville Public Library  
Zoom

Birth-5 years old  
Birth-18 months  
STEAM  
Music  
Social Emotional Learning

Spanish  
Portuguese  
Nepali  
Mandarin

81

Families who completed the  
Ages & Stages  
Questionnaire  
(as of April 24, 2024)

## Parent Support Groups

5

Weekly Support Groups

127

Families who participated  
(as of April 24, 2024)

In this Together  
New Parents Group  
Spanish Group  
Father's Group  
Families of Multiples Group

**1 Success** We've expanded our programming even though CFCE has been level funded for 7 years!

**1 Need** We're still hoping to identify a new permanent space for our playgroups

## Parenting Workshops

7

Workshops

**Power of Parenting: English and Spanish - 34 families**  
**Baby Sign Language - 32 families**

Toilet Training\*  
Social Emotional Development\*  
Helping Children Through Daily Transitions\*

\* May and June 2024



# Birth-5 Programs & Services: 2023-24

## ParentChild+ Home Visiting Program

60

Families

9

SFLC Home Visitors

2760

Home Visiting hours  
that families received

Languages represented  
amongst families

Spanish  
Portuguese  
Nepali  
Somali  
Gujarati  
Hindi  
English  
Punjabi

232

General referrals

30

Enhanced referrals



**1 Success** Our current home visitors are graduates of the program themselves!

**1 Action Step** Currently researching how the home visiting model might be integrated into PK/K

**ParentChild+**  
Equal Possibilities From The Start





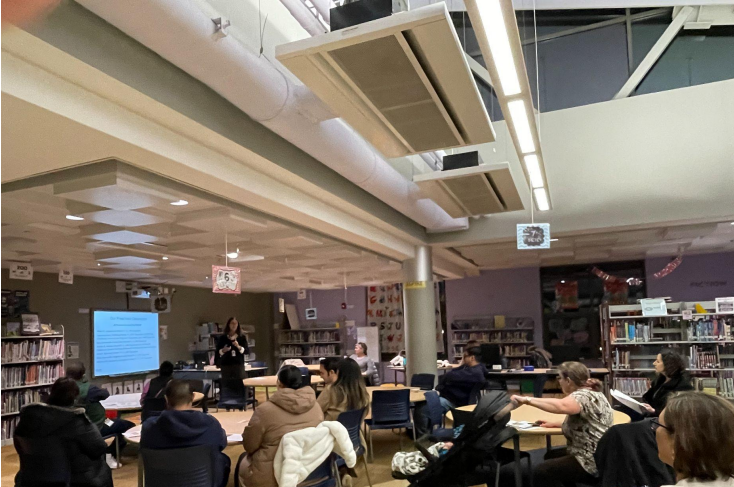


# Family Engagement in SPS

*Creating Equitable Access for Families*







# Enrollment

*Building trust in the school system*

**1114**

Students who completed enrollment to start school in SY23-24

**25%**

of families completed registration fully online

**43.5%**

of families partially completed registration, requiring follow-up from the Enrollment Team

**31.5%**

Number of families who required in-person support from the Enrollment Team



# Family & Community Liaisons: 2023-24

## Create a welcoming school community

- **Building trusting relationships with families**
- Directing families to available resources
- Hosting Back to School Socials, Coffee Hours with Principals, Heritage Night Celebrations, Showcase of Learning, Multicultural Fair, etc.
- Organizing Open Houses and Parent Teacher Conferences...and much more!

**1 Success:** Being warm, friendly and trusted connectors for families

**1 Need:** Consistency and sustainability of resources that help stabilize families



## Food Markets

14

Free Food Markets  
September 2023-April 2024

234

Avg people served  
at WSNS per market

597

Avg people served  
at ESCS per market



## Carrot Cards

568

Families Served

959

Children served



769

Families who received  
MBTA monthly passes

# Multilingual Services: 2023-24

## Interpretation services (verbal)

**5**

**SPS departments**  
accessed interpretation  
services

**100%**

**of SPS Schools**  
accessed interpretation  
services

## Requests by type

**26%** 1:1 Parent-Teacher Meetings

**24%** Parent Teacher Conferences

**18%** District-wide Events

**17%** Phone Calls from Nurses

**15%** School or program-specific events

## Events

- Back to school events
- PK & K Orientations
- Parent Teacher Conferences
- Open Houses
- School Committee Meetings
- Parenting Workshops
- Superintendent Entry Plan Family meetings, and more!

**1305**

**Hours of  
interpretation  
for events**

## Translation services (written)

**15**

**SPS departments**  
accessed translation  
services

**100%**

**Of SPS Schools**  
accessed translation  
services

**257**

**Documents translated**

(from flyers to 100+ page handbooks)

## Top 4 Requested Languages

1. Spanish
2. Portuguese
3. Haitian Creole
4. Arabic

## Low Incident Languages:

Amharic, Bengali, Cantonese, Dari, Nepali, Mandarin, Punjabi, Wolof

## 1 Success

Launch of new request form → increase efficiency + volume of services provided

## 1 Need

Increase both number and proficiency of interpreters in our pool





# Volunteer Program: 2023-24

**183**

**Weekly Volunteers**  
(As of 4/22/24)

**3,468**

**Hours served by  
volunteers**  
(As of 4/22/24)

**202**

**New Volunteer  
Self-Registrants**  
(As of 4/22/24)

**135**

**Attendees at  
Volunteer  
Orientations**

## Sampling of placements

Afterschool programs  
English classes with SCALE  
Math / Literacy Tutoring  
MCAS Math Prep  
Recess support  
Science classes  
SEL support and mentoring  
...and more!



*A parent volunteer teaches yoga classes at ESCS*

***‘I have some great news...[Student] HAS PASSED MCAS MATH!!!!!!  
I can’t thank [the volunteer] enough for all the help and time she gave.’***

- Next Wave Full Circle Counselor

## **1 Success**

Launch of new request form → more specific requests and better matches for students and volunteers

## **1 Action Step**


Discovering more about how volunteer support can directly impact student learning

# Internal Capacity Building: 2023-24


Created stronger internal communication & resource-sharing systems

**2024 Somerville Resources Handbook**

[tinyurl.com/somervillehandbook](http://tinyurl.com/somervillehandbook)



[Table of Contents](#)



**Multilingual Services Team**  
Interpretation & Translation Request Form

**SY23-24: SHS Staff Request for Volunteers**

**SY23-24: PK-8 & District Staff Request for Volunteers**

**SOMERVILLE FAMILY LEARNING COLLABORATIVE**  
Newsletter  
January 2024  
Edition #6

**Next PK-8 Open Houses: Tuesday, JAN 9th, 9am - 1pm** Snow Date: Thursday, JAN 11th



**New year, new registrations!**

**Jan 2nd:** Enrollment begins for the 2024-25 school year.

**Jan 3rd:** Enrollment begins for the 2024-25 school year.

**Jan 22nd:** Enrollment begins for Spring Multilingual Playgroups & Parent Support Groups!

**Somerville ARPA Scholars**

## Professional Development for SPS Staff



### NEW INTERPRETERS WORKSHOP!

CALLING SPS STAFF AND VOLUNTEERS  
LEARN HOW TO INCREASE LANGUAGE ACCESS FOR SPS FAMILIES!

### New Interpreters Workshop

Fall 2023

By Maura Mendoza



### Supporting Homeless Students: Understanding the McKinney Vento Act

Spring 2024

By Regina Bertholdo & Jennifer Ochoa

### Affinity Groups

#### SPS Educators of Asian Descent

SY23-24

By Francesca Nguyen Broekman & Tina Lu

#### Portuguese Affinity Group & Portuguese Providers Group

SY23-24

By Regina Bertholdo

### In SY24-25, SFLC plans to offer Family Engagement & Language Access PD for SPS Staff Members

# Family Engagement & Support: 2023-24

## English Classes for Parents

**6**

Weekly Classes (online  
+ in person)

**61**

Parent Participants



The Welcome Project



## District-wide Workshops

Welcome to Somerville Workshop  
for Immigrant Families

Vaping, Substance Use and  
Teen Mental Health

Learning about Foster Care

## District-wide Events

2024 Summer  
Activities Fair

2024 Week of  
the Young Child

**25**

Community Partners

**12**

Community Partners

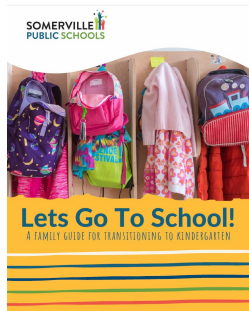
**350+**

Participants

**215**

Participants

## Transition for Kindergarten Families



New!  
Family Guide for  
transitioning to  
Kindergarten

## Superintendent Carmona Entry Plan

Ensured equitable representation  
from diverse families

Hands-on support with  
data collection and analysis

Facilitated student, staff, and family  
conversations to review findings

## Guaranteed Basic Income Pilot

**70**

SPS Families





# Basic Needs & Housing Support Services: 2023-24

## History & Overview



- February 2022: BNHSS Office Opened
- August 2022: Jennifer Ochoa, BNHSS Social Worker Hired

**SY22-23**

**79**

Homeless Students

**92**

Students at risk of homelessness

**33**

Foster students

**SY23-24**

**70**

Homeless Students

**52**

Students at risk of homelessness

**35**

Foster students

**70**

Families recommended for Guaranteed Basic Income Pilot (GBI)

**11**

Unaccompanied Youth recommended for GBI

**25**

Families supported through the Municipal Voucher Program (MVP)

**Cradles to Crayons**

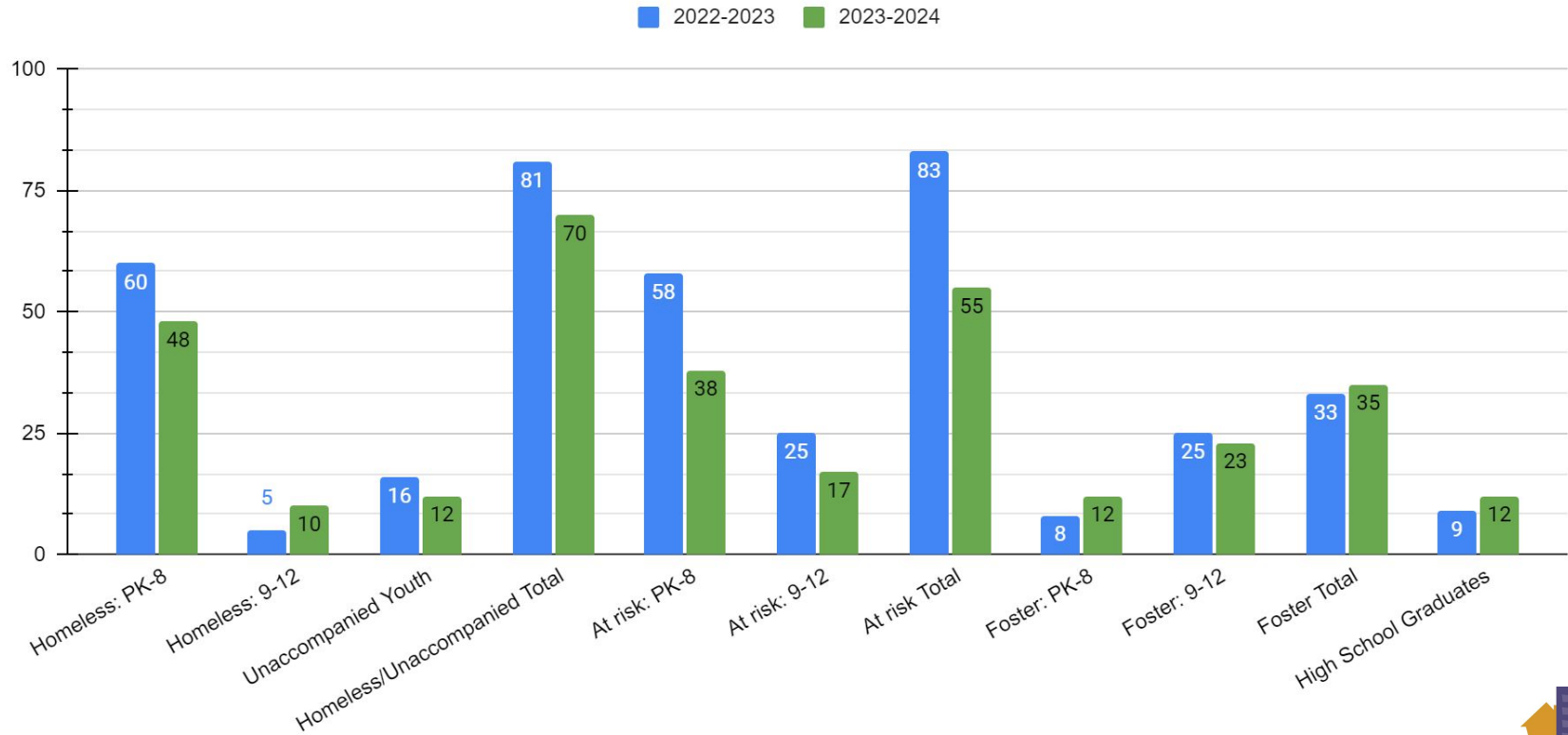


## Policy & Advocacy

- Guaranteed Basic Income (GBI)
- Municipal Voucher Program (MVP)
- New Arrival Working Group
- Mass Coalition for the Homeless
- Unaccompanied Youth - State
- Unaccompanied Youth - Local

# BNHSS Trends: 2023-24

Students Supported by the Office of Basic Needs & Housing Support Services

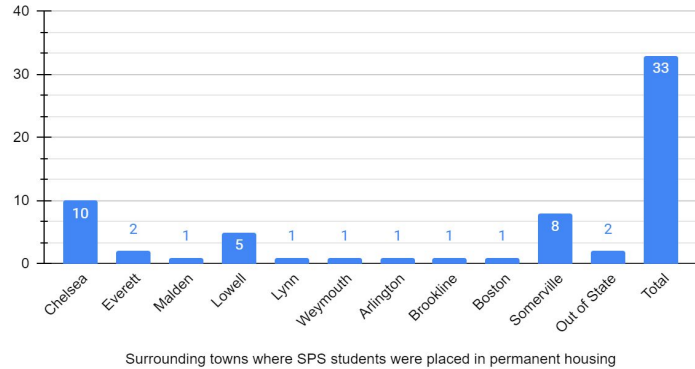


Homeless, Unaccompanied, At Risk and Foster Students in SPS

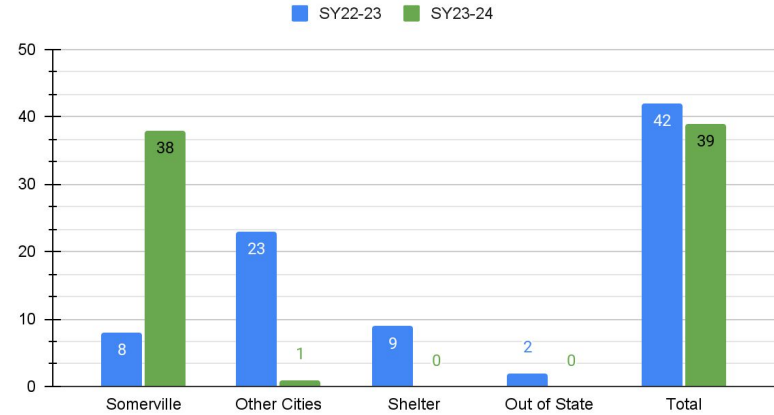


# BNHSS Trends: 2023-24

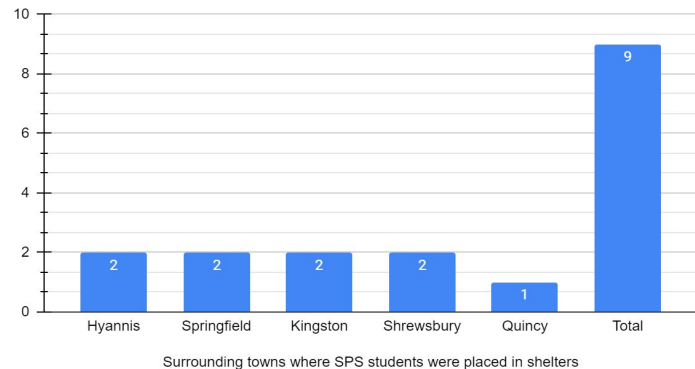
SY22-23: SPS students placed in permanent housing



SPS students placed in permanent housing last year versus this year



SY22-23: SPS students placed in shelters



## Successes

- Dedicated work to this specific population
- Development of cross-sector collaboration and partnerships (MVP/GBI)
- increased transportation capacity
- Districtwide PD

## Action Steps

- Address barriers to efficiency
- Continue to innovate



# Who helps to make all of this work possible?

## Overall Partners

### **Somerville City Departments**

Office of Food Access & Healthy Living  
Office of Housing Stability  
Office of Mobility  
Parks & Recreation  
Somerville Office of Immigrant Affairs  
SomerPromise

### **Community Partners**

Cambridge Health Alliance  
Cambridge Public Schools  
Community Action Agency of Somerville  
Dog B.O.N.E.S.  
Families First  
Food for Free  
MA Department of Children & Families  
Nike  
Padres Latinos  
Parent Teachers Association  
RESPOND  
Somerville Asian Family Network  
Welcome Project  
...and more!

## Early Beginnings Partners

Beautiful Stuff  
Elizabeth Peabody House  
Growing Center  
Harvard University  
Head Start  
Riverside Early Head Start  
Somerville Public Library  
Tufts University  
United Way  
WIC

## BNHSS Partners

Boynton Yards  
Bullpen Project  
City Line Laundry  
City of Somerville  
Clothing Closet Volunteers  
Connexion Church  
Cradles to Crayons  
Fadil African Hair Braiding  
Seven Hills Presbyterian Church  
Somerville Homeless Coalition  
Somerville Kiwanis Club  
Volunteer Ventures  
YouthHarbors